

# Welcome!

## HERE YOU CAN RECEIVE MEDICAL AND SOCIAL HELP

The staff will help you to understand your needs and will explain to you how to obtain assistance

In this centre there are medical doctors, nurses, psychologists, family consultants, cultural intermediates that are volunteers of the "Istituto di Medicina Solidale" and employees of the "Policlinico di Tor Vergata"

### Who is the service for ?

- ✓ People temporarily in the country
- ✓ Foreign citizens with legal permission to stay in the country
- ✓ Italian citizens who are exempt from paying the national health service

### How to access the service?

- ✓ Walking in without an appointment and documents
- ✓ If you are from a foreign country without an regular visa, the staff will give to you the STP number (anonymous number for the people temporarily present in the country)
- ✓ The people under age must be present with their parents or tutors.

### What social services can you have?

- ✓ Family consulting
- ✓ Psychological support
- ✓ Female support services

### What health services can you have?

- ✓ Medical specialist offices
- ✓ Nurseling offices

<b>MEDICAL OFFICES</b>	<b>SERVICES</b>	
<b>General Medicine</b>	<b>Check up/initial visit follow up by the specialist</b>	<b>Endocrinology Ematology Immunology and Rheumatology</b>
<b>Epatology</b>	<b>Check up</b>	<b>Hepatic and pancreatic ultrasound scan</b>
<b>Diabetology</b>	<b>Check up Follow-up</b>	<b>Type II diabetes prevention Diet check up Dislipidemia</b>
<b>Cardiology</b>	<b>Check up ECG reading</b>	<b>Cardiac ultrasound scan</b>
<b>Infectivology</b>	<b>Check up HIV diagnosis general infectivology</b>	<b>Diagnosis and care of viral and chronic hepatitis Tropical diseases HIV related diseases</b>
<b>Sexual Transmitted Diseases (STD)</b>	<b>Check up</b>	<b>Diagnosis and care of STD</b>
<b>Pneumology</b>	<b>Check up</b>	<b>Spirometry</b>
<b>Gynaecology</b>	<b>Check up cervical and vaginal plug</b>	<b>Pap test</b>
<b>Obstetric</b>	<b>Check up pregnancy Check follow up</b>	<b>Hipertension, diabetes and related pregnancy pathologies follow up birth preparation courses</b>
<b>Paediatrics</b>	<b>General paediatric check up allergological check up</b>	<b>Prick - rast test</b>
<b>Children's neuro-psychiatry</b>	<b>check up</b>	<b>Interview</b>
<b>Psychiatry</b>	<b>Check up</b>	<b>Interview</b>
<b>General surgery</b>	<b>Check up</b>	<b>Breast ultrasound scan</b>
<b>Psychotherapy</b>	<b>Psychological interview and support</b>	<b>Individual and family psychotherapy</b>
<b>NURSELING OFFICES</b>	<b>Medications drug's administration check up of clinical parameters</b>	<b>check up of glycaemia Education and Prevention of the STD</b>

## WEEKLY CALENDAR OF THE PERFORMANCES

	<b>Monday</b>	<b>Tuesday</b>	<b>Wednesday</b>	<b>Thursday</b>	<b>Friday</b>
<b>7.30 am to 8.00 am</b>	collecting blood sample		collecting blood sample		collecting blood sample
<b>9.00 am to 1.00 pm</b>	<b>General medicine</b>	<b>general medicine Epatology STD</b>	<b>Infectivology Gynaecology Psychology</b>	<b>Cardiology (10 am to 1 pm) general medicine Paediatrics</b>	<b>general medicine Paediatrics</b>
<b>10 am to 12 pm</b>	<b>Reception services Social-health orientation center</b>	<b>Reception services Social-health orientation center</b>	<b>Reception services Social-health orientation center</b>	<b>Psychiatry (11 am to 1.30 pm) Reception service Social-health orientation center</b>	<b>Reception service Social-health orientation center</b>
<b>2.30 pm to 6 pm</b>	<b>General medicine Paediatrics Children's Neuro- psychiatry</b>	<b>General Surgery Oncology Gynaecology</b>	<b>General Medicine Diabetology Pneumology Psychology</b>	<b>General Surgery Oncology</b>	<b>Children's Neuro- psychiatry Psychology Cultural mediation Female support services</b>

### Schedules

The offices services are open for 10 hours a day

From Monday to Friday from 9.00 am to 1.00 pm and from 2.00 pm to 6.00 pm.

The collects blood samples centre is open Monday, Wednesday and Friday from 7.30 am to 9.30 am

#### How get to the offices?

The "Poliambulatorio di Medicina Solidale e delle Migrazioni" is located in Rome, on the first floor of the plain Tor Bella Monaca church, Santa Maria Madre della redenzione, at via Duilio Cambellotti 18

**From Termini station:** at termini laziali take the train in the direction for Pantano/Borghese Pantano, get off at the Torrenova stop, walk 500 meters to via Duilio Cambellotti, 18.

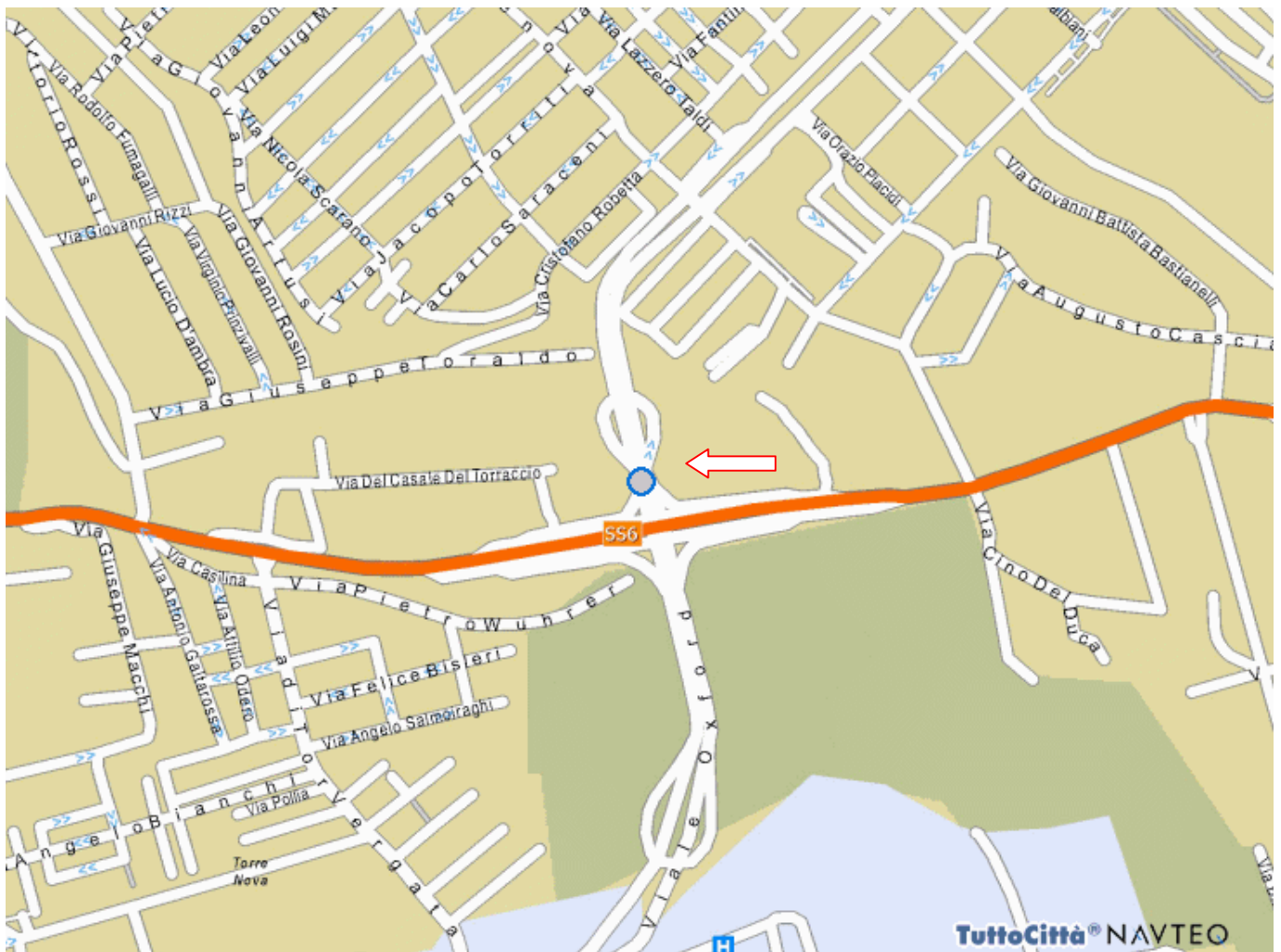
**From Tiburtina Station:** at the Tiburtina Station bus stop take bus 409 (Arco di Travertino), get off at the Torpignattara/Casilina stop, take the train in the direction for Pantano/Borghese, get off at the Torrenova stop, walk 500 meters to via Duilio Cambellotti, 18.

**From Anagnina metrostation:** take bus 20

From Cave Celoni bus station: take bus 057

**Telephone: 06 - 20 61 01 41**

### MAP OF AREA



### HISTORICAL BACKGROUND

The "Poliambulatorio di Medicina Solidale e delle Migrazioni" started the social and medical assistance since December 2004.

The health centre was founded by the "Istituto di Medicina Solidale" (no profit organization) and formed an agreement with the "Policlinico di Tor Vergata". The centre was established through the awareness of the social and health issues recognized in the area and the will from the medical and social assistant in helping people in need.

The centre wants to ensure easy access and high qualified health assistance for everybody.